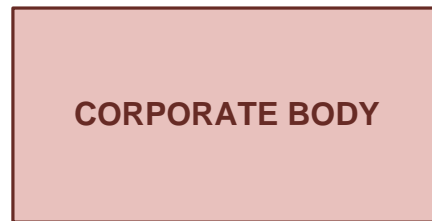
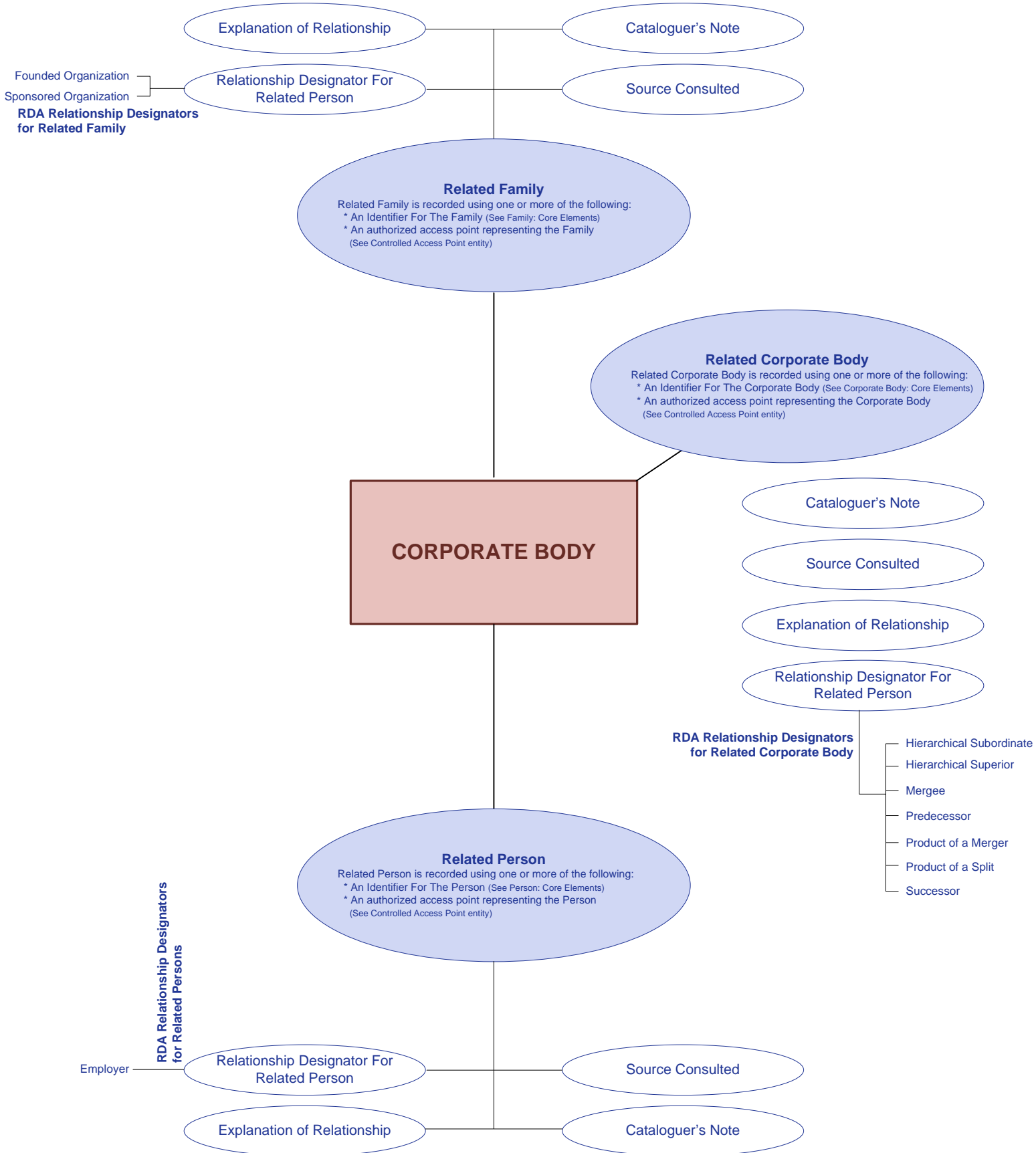




Corporate Body Carries No Core Relationships



Corporate Body Carries No Core Relationships



Related Corporate Body. A corporate body that is associated with the person, family, or corporate body represented by a preferred access point and/or identifier (e.g., a musical group to which a person belongs, a subsidiary company). Related corporate bodies include corporate bodies that precede or succeed the body represented by an authorized access point and/or identifier as the result of a change of name.

RDA Relationship Designator for Related Corporate Body.

Hierarchical Subordinate. A corporate body that is subordinate to the other corporate body (e.g., a parent body).

Hierarchical Superior. A corporate body that is hierarchically superior to the other corporate body.

Mergee. A corporate body that merged with the other corporate body to form a third.

Predecessor. A corporate body that precedes the other corporate body.

Product of a Merger. A corporate body that resulted from a merger of two or more other corporate bodies.

Product of a Split. A corporate body that resulted from a split or division of the other corporate body.

Successor. A corporate body that succeeds or follows the other corporate body.

Explanation of Relationship. Information elaborating on or clarifying the relationship between an entity represented by a preferred access point and/or identifier and a related entity.

Source Consulted. A resource used in determining the name, title, or other identifying attributes of an entity, or in determining the relationship between entities.

Cataloguer's Note. An annotation that might be helpful to those using or revising the preferred access point representing an entity or relationship data, or creating a preferred access point representing a related entity.

Related Family. A family that is associated with the person, family, or corporate body represented by a preferred access point and/or identifier (e.g., a person's family, a family that owns the controlling interest in a corporate body).

RDA Relationship Designator for Related Family.

Founded Organization. A corporate body that the family founded.

Sponsored Organization. A corporate body that the family sponsors.

Explanation of Relationship. Information elaborating on or clarifying the relationship between an entity represented by a preferred access point and/or identifier and a related entity.

Source Consulted. A resource used in determining the name, title, or other identifying attributes of an entity, or in determining the relationship between entities.

Cataloguer's Note. An annotation that might be helpful to those using or revising the preferred access point representing an entity or relationship data, or creating a preferred access point representing a related entity.

Related Person. A person who is associated with the person, family, or corporate body represented by a preferred access point and/or identifier (e.g., a collaborator, a member of a family, a founder of a corporate body). Related persons include separate identities established by an individual.

RDA Relationship Designator for Related Person.

Employer. A corporate body that employs the person.

Explanation of Relationship. Information elaborating on or clarifying the relationship between an entity represented by a preferred access point and/or identifier and a related entity.

Source Consulted. A resource used in determining the name, title, or other identifying attributes of an entity, or in determining the relationship between entities.

Cataloguer's Note. An annotation that might be helpful to those using or revising the preferred access point representing an entity or relationship data, or creating a preferred access point representing a related entity.